

CompoSol[®] Structure

CompoSol[®] Structure is a Composite Repair System for reinforcing worn and holed structural members including, but not limited to, beams, columns, hollow sections and piles. CompoSol[®] Structure is applicable to both steel and concrete.

Design

CompoSol[®] Structure is designed to restore or upgrade the load capacity of the structural member. IMG Composites engineers design the composite reinforcement using a combination of engineering first principles, design standards and the latest research papers. All designs are verified using Finite Element Analysis.

Application

Surfaces should be clean and free from loose rust and contamination. Preparation should be in line with the requirements of the latest international standards.

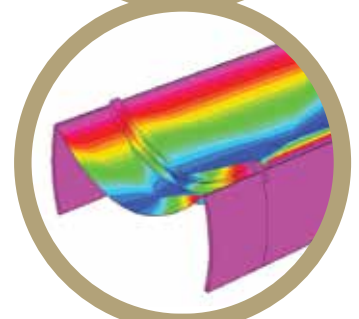
CompoSol[®] Structure should only be applied by applicators trained and certificated in line with ACoReS Audit requirements.

Benefits

- Cost effective
- Strong and stiff material restores load capacity and serviceability
- Flexible - applicable to a wide range of complicated geometries
- Can be applied to surfaces prepared to ST2 standard
- Applied under cold permit to work procedures
- Minimises added weight
- Easy to apply, no special equipment required
- 100% Solids—No shrinkage
- Fire Rated to BS 476 Parts 6 and 7

Product Data

- Application Temperature +10°C to +50°C
- Service Temperature -50°C to +60°C
- Cure Time 24 hours at 20°C
- Protect from frost and excessive heat
- Storage: details to follow



Providing the Complete Composite Solution